

# Ford

# Reprogramming User Guide

**Version 3.0**

**June 2014**

## Foreword

This document describes DG Technologies VSI-2534, a SAE J2534 Pass-Thru device, with its primary purpose to program automotive ECUs (Electronic Control Units). It provides module programming for development, end-of-line testing and re-programming. This document shows the general procedures for purchasing, installing and using the OEM programming application with the VSI-2534 Pass-Thru device. Because the procedures are generic in nature, this may not capture every screen or every scenario for each and every vehicle. For any screen, read the directions on the screen and proceed as indicated. Programming is vehicle specific and directions may vary. All documentation is subject to change at any time. Any and all OEM documentation should be read in its entirety along with the vehicle Service Manual prior to programming.

The VSI-2534 is also useful for vehicle diagnostics, development, general design, and hardware in-the-loop simulation and anywhere communications with a vehicle network are required.

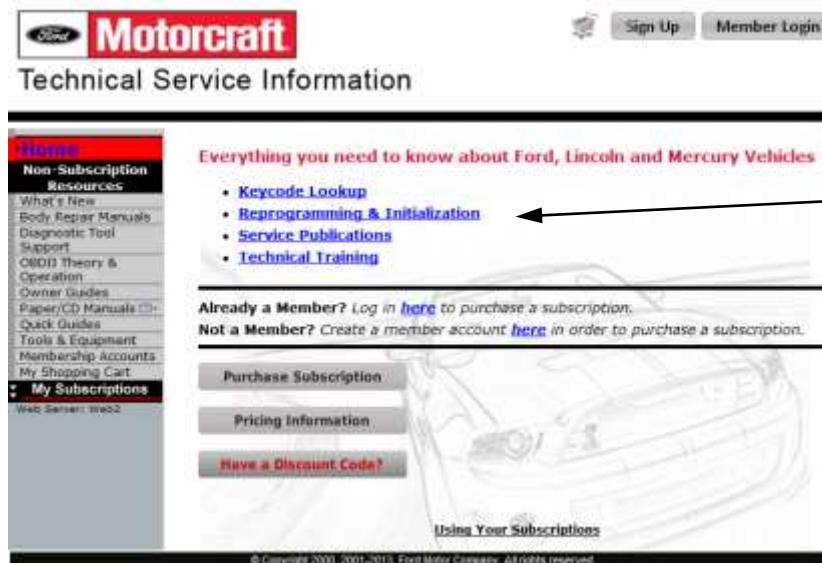
## Table of Contents

- Registration & Subscription (pg. 2-6)
- FMP Download & Installation (pg. 7-11)
- Ford Reprogramming Guide (pg. 12-22)

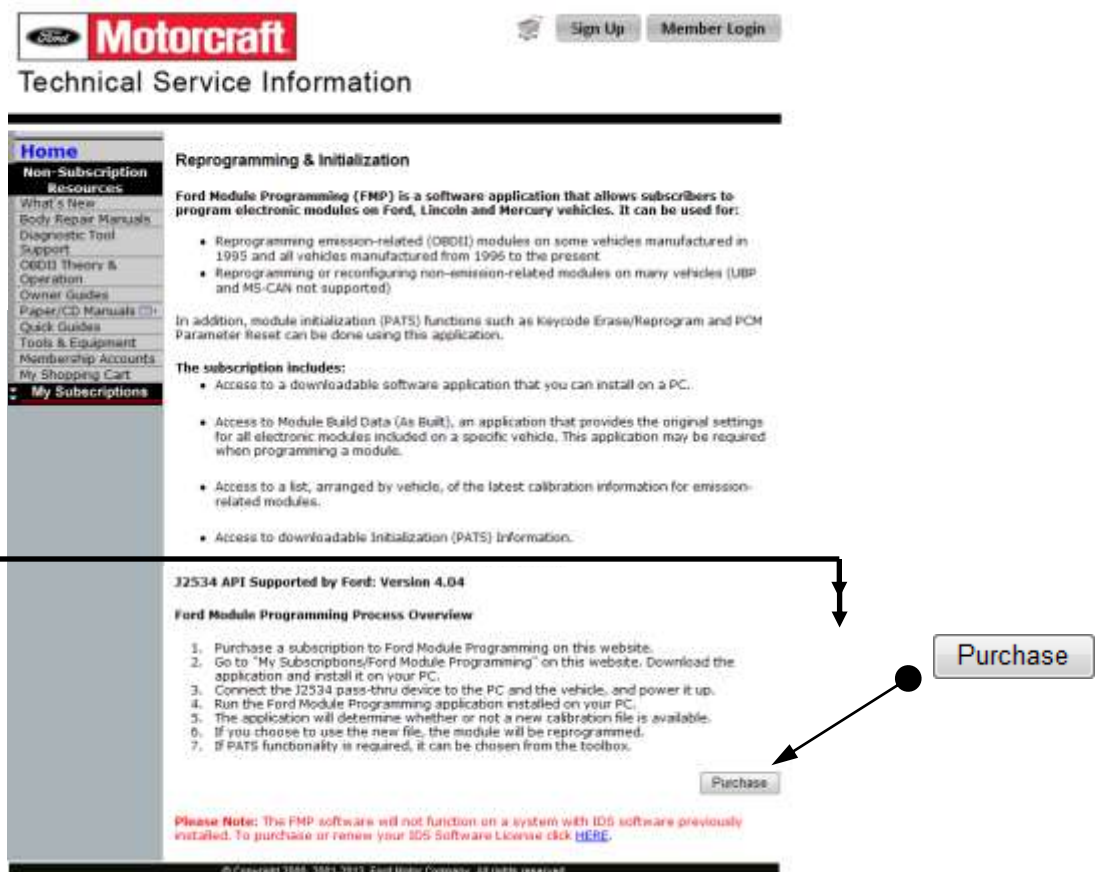
© 2006 - 2014 Dearborn Group, Inc.  
33604 West Eight Mile Road  
Farmington Hills, MI 48335  
Phone (248) 888-2000 • Fax (248) 888-9977

This document is copyrighted by Dearborn Group, Inc. Permission is granted to copy all and/or entire page portions of this manual, provided such copies are for use with the product provided by DG Technologies (Dearborn Group, Inc.) or any of its affiliates, and that each instance of DG Technologies, Dearborn Group, Inc., and our website [www.dgtech.com](http://www.dgtech.com) remains on all copies as on the original.

## Registration & Subscription (pg. 2-6)



- In Internet Explorer, go to [www.motorcraftservice.com](http://www.motorcraftservice.com) and click on “Reprogramming & Initialization”.

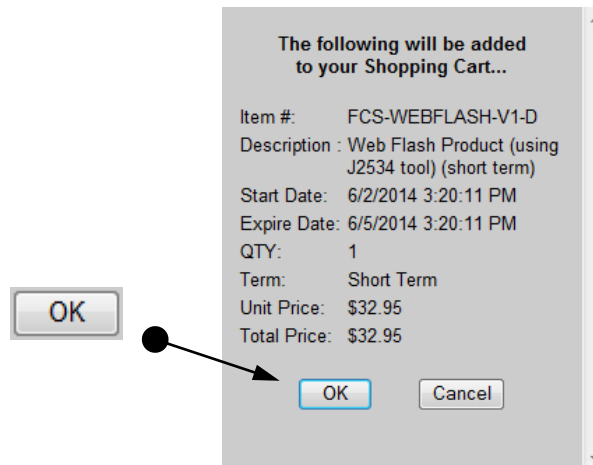


- Scroll down page and click on “Purchase”.

This document is copyrighted by Dearborn Group, Inc. Permission is granted to copy all and/or entire page portions of this manual, provided such copies are for use with the product provided by DG Technologies (Dearborn Group, Inc.) or any of its affiliates, and that each instance of DG Technologies, Dearborn Group, Inc., and our website [www.dgtech.com](http://www.dgtech.com) remains on all copies as on the original.



- Select “Terms” and “# of Terms” in drop down menu’s, then “Add to Cart”.



- Review and click on “OK” if acceptable.



- Click on "Checkout".

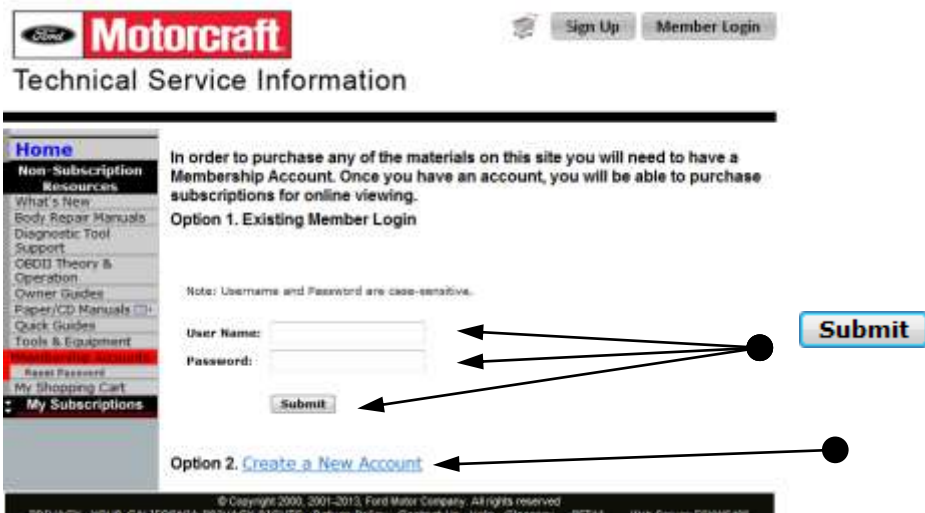


- Select desired "Term", (Short, Month, Year) and click on "Add to Cart".

This document is copyrighted by Dearborn Group, Inc. Permission is granted to copy all and/or entire page portions of this manual, provided such copies are for use with the product provided by DG Technologies (Dearborn Group, Inc.) or any of its affiliates, and that each instance of DG Technologies, Dearborn Group, Inc., and our website [www.dgtech.com](http://www.dgtech.com) remains on all copies as on the original.




- Read Disclaimers and Terms of User and Click "I Agree".



- If you have previously registered, fill out the "User Name" and "Password", then "Submit" to continue. If not, click on the "Create a New Account" option and follow the required steps.

This document is copyrighted by Dearborn Group, Inc. Permission is granted to copy all and/or entire page portions of this manual, provided such copies are for use with the product provided by DG Technologies (Dearborn Group, Inc.) or any of its affiliates, and that each instance of DG Technologies, Dearborn Group, Inc., and our website [www.dgtech.com](http://www.dgtech.com) remains on all copies as on the original.

 **QUALITY PARTS FOR FORD, LINCOLN AND MERCURY VEHICLES**

---

**Payment Information**

---

Date: 12/12/2013  
Order Number: TSOED4B4DA5  
Order Total: \$26.95

---

Buyer:  State/Province:   
Address 1:  Zip/Postal Code:   
Address 2:  Country:   
City:  Email:   
Phone:

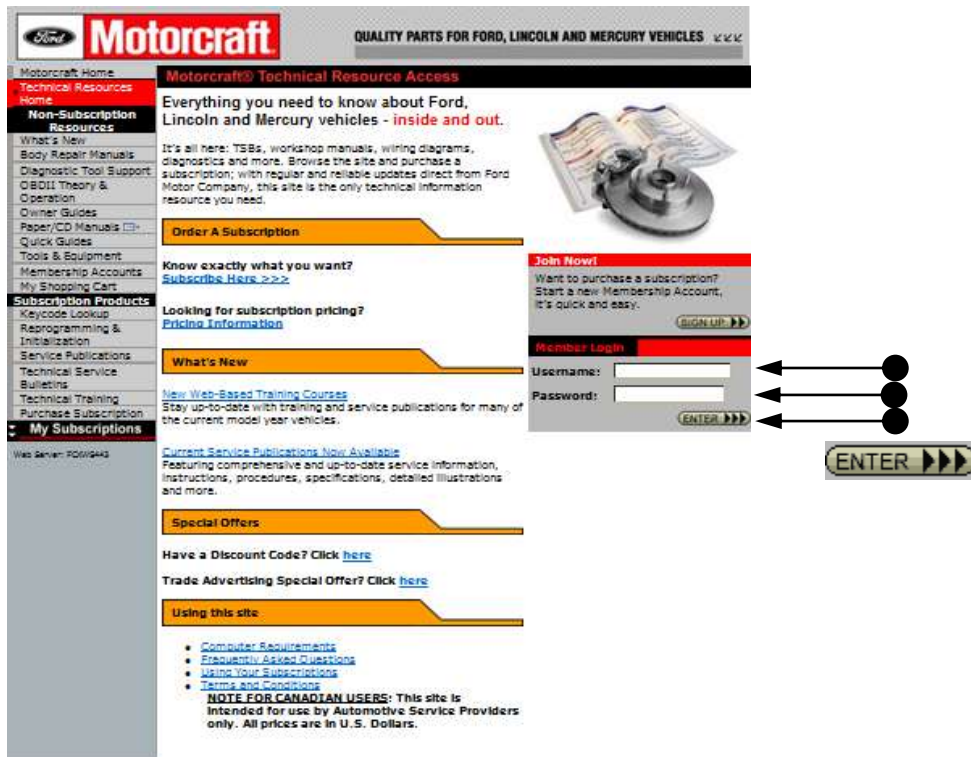
---

Payment Method:   
Name on Credit Card:   
Credit Card #:   
Credit Card Exp Date:  -   
Credit Card ID #:   
\* 2 or 4 digits located on the back of your credit card.

- Fill out applicable information and select "Submit Order".

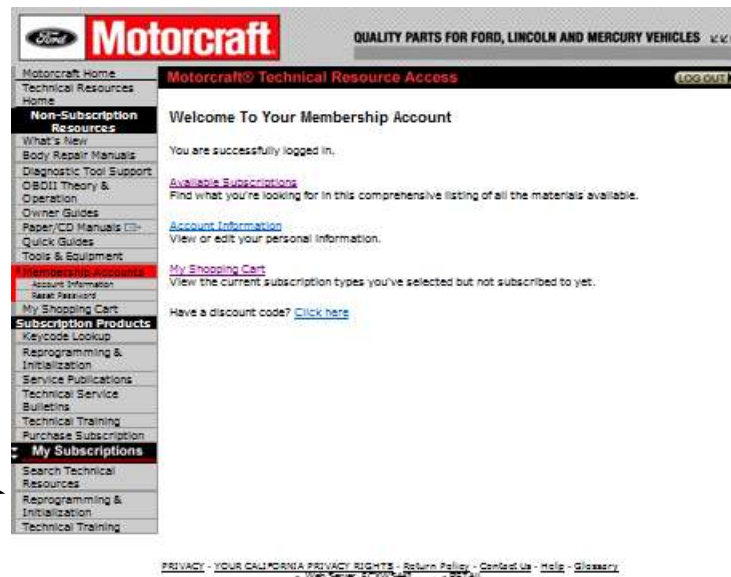
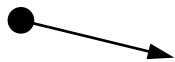


## FMP Download & Installation



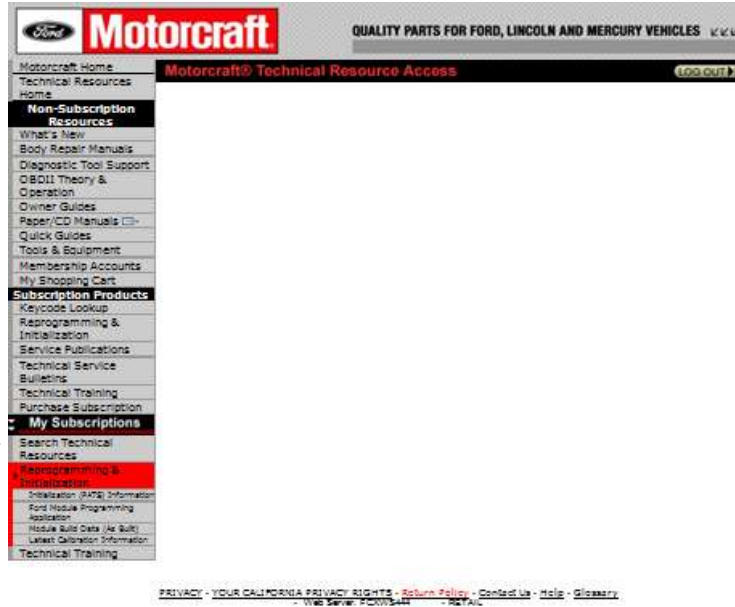
- Log onto [www.motorcraftservice.com](http://www.motorcraftservice.com) using the “Username” and “Password” and click on “Enter”. This is case-sensitive.

Reprogramming & Initialization



- Click on Reprogramming & Initialization

This document is copyrighted by Dearborn Group, Inc. Permission is granted to copy all and/or entire page portions of this manual, provided such copies are for use with the product provided by DG Technologies (Dearborn Group, Inc.) or any of its affiliates, and that each instance of DG Technologies, Dearborn Group, Inc., and our website [www.dgtech.com](http://www.dgtech.com) remains on all copies as on the original.



- Click on “Ford Module Programming Application”.

**NOTE:** Software download and installation time will vary depending on the type of Internet connection (phone line, Ethernet, etc.)

**Ford Module Programming Start Up**

Before starting the application, always make sure that:

- The SAE J2534 pass-thru device is attached to the PC and powered up
- The software that you received with the SAE J2534 pass-thru device is installed on the PC

1. Double click the Ford Module Programming icon on the desktop
2. If this is the first time that the application is being used, a dialog box will appear indicating that the SAE J2534 pass-thru device has not been defined. Select the manufacturer and name of the pass-thru device that you are using from the lists provided.
3. Select "Save Device"
4. Select "Exit Application"
5. Restart the application using the icon on the desktop

**Scheduled Ford Module Programming Updates**

FMP65	27-Jan-10
FMP66	31-Mar-10
FMP67	26-May-10
FMP68	28-Jul-10
FMP69	22-Sep-10

**Software and User's Guide Downloads**

Download [Ford Module Programming](#)      View [Ford Module Programming User's Guide](#)

- Scroll to bottom of next screen and click on “Ford Module Programming”. **NOTE:** it is recommended that the “Ford Module Programming User’s Guide”, also located here, be read in its entirety.



This document is copyrighted by Dearborn Group, Inc. Permission is granted to copy all and/or entire page portions of this manual, provided such copies are for use with the product provided by DG Technologies (Dearborn Group, Inc.) or any of its affiliates, and that each instance of DG Technologies, Dearborn Group, Inc., and our website [www.dgtech.com](http://www.dgtech.com) remains on all copies as on the original.



- Click “Save”.



- Select “Desktop” and then click on “Save”.



- Downloading Complete. Click on “Close”.

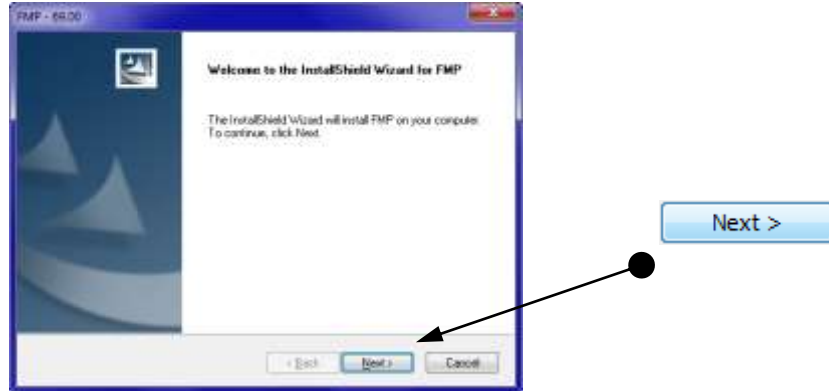


- Locate “FMPxx” icon and double-click on it. (FMP version may be different)

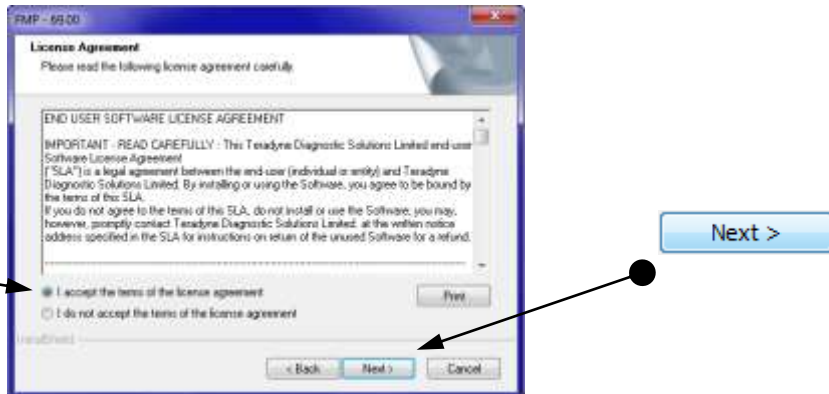


- FMP Installing...

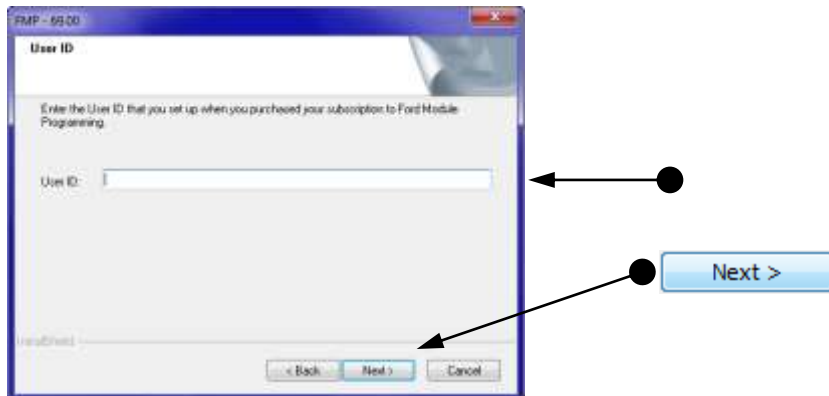
This document is copyrighted by Dearborn Group, Inc. Permission is granted to copy all and/or entire page portions of this manual, provided such copies are for use with the product provided by DG Technologies (Dearborn Group, Inc.) or any of its affiliates, and that each instance of DG Technologies, Dearborn Group, Inc., and our website [www.dgtech.com](http://www.dgtech.com) remains on all copies as on the original.



- Click on “Next”.

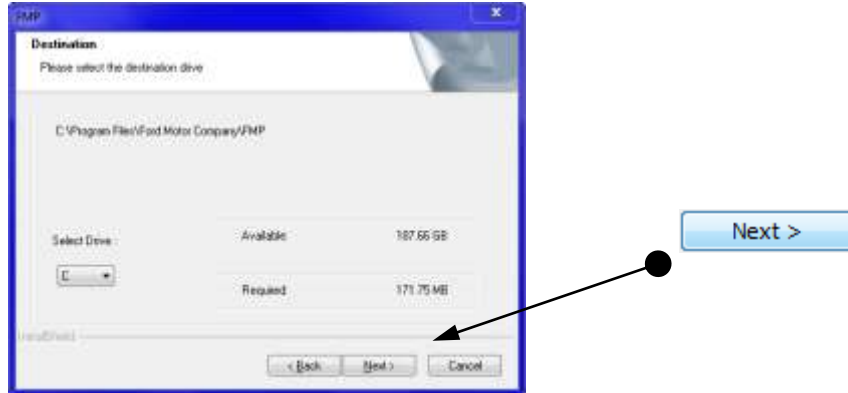


- Read “End User Software License Agreement” and click the radio button to “I accept...” and then “Next”.

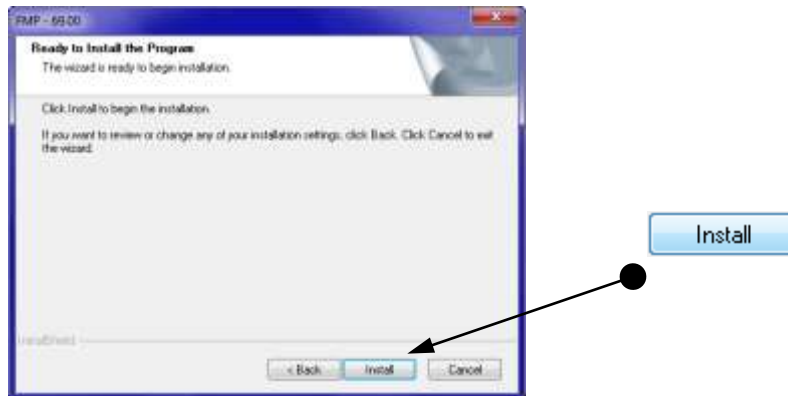


- Type in “User ID” and click on “Next”. The User ID is case-sensitive. If this step is not done correctly, the FMP application will not recognize the subscription.

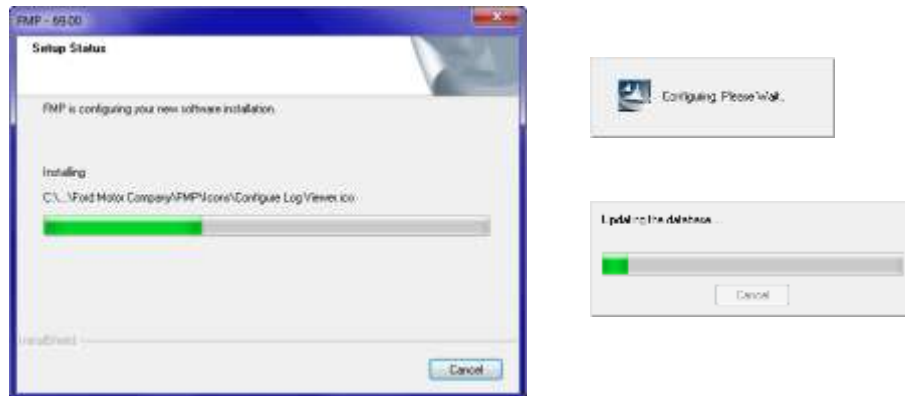
This document is copyrighted by Dearborn Group, Inc. Permission is granted to copy all and/or entire page portions of this manual, provided such copies are for use with the product provided by DG Technologies (Dearborn Group, Inc.) or any of its affiliates, and that each instance of DG Technologies, Dearborn Group, Inc., and our website [www.dgtech.com](http://www.dgtech.com) remains on all copies as on the original.



- Note hard disc availability and requirements. Make sure there is enough disc space and click “Next”.



- Click “Install”.



- Installing FMP...



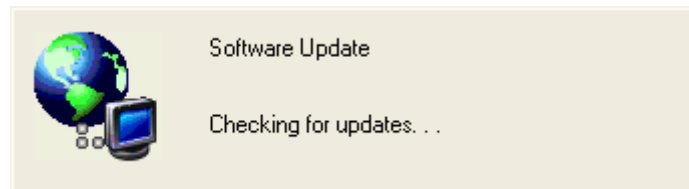
- Restart computer for proper installation. Click “Finish”.

This document is copyrighted by Dearborn Group, Inc. Permission is granted to copy all and/or entire page portions of this manual, provided such copies are for use with the product provided by DG Technologies (Dearborn Group, Inc.) or any of its affiliates, and that each instance of DG Technologies, Dearborn Group, Inc., and our website [www.dgtech.com](http://www.dgtech.com) remains on all copies as on the original.

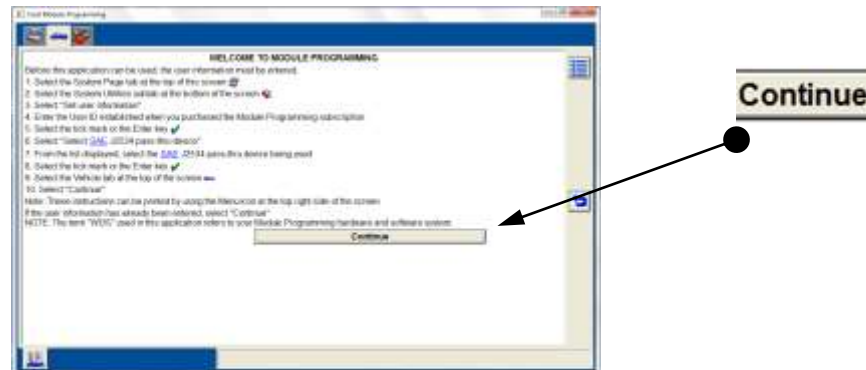
## FMP Programming



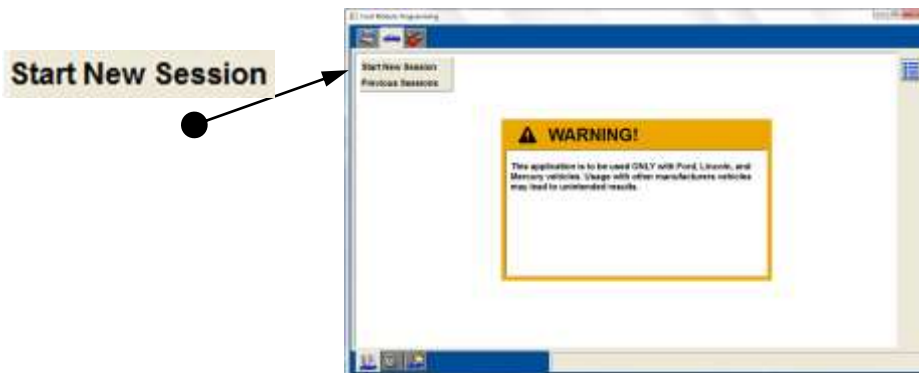
- Locate the “Ford Module Programming” (FMP) icon on the desktop and double-click on it.



- If there are “Software Updates” required for the FMP, you will be prompted on additional screens to select the new software update and install it. This may take a few minutes. Just respond to the prompts accordingly to continue.

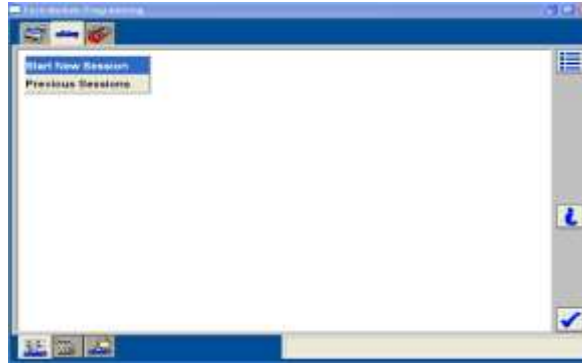


- Click on “Start New Session”.



- Click on “Start New Session”.

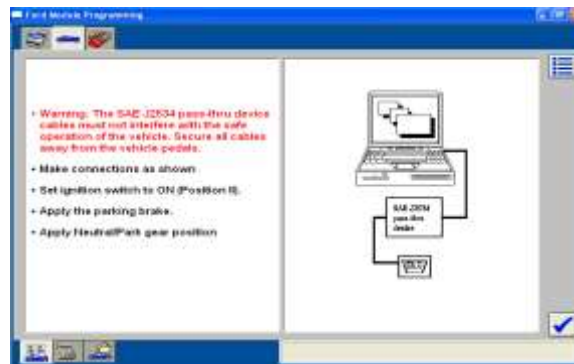
This document is copyrighted by Dearborn Group, Inc. Permission is granted to copy all and/or entire page portions of this manual, provided such copies are for use with the product provided by DG Technologies (Dearborn Group, Inc.) or any of its affiliates, and that each instance of DG Technologies, Dearborn Group, Inc., and our website [www.dgtech.com](http://www.dgtech.com) remains on all copies as on the original.



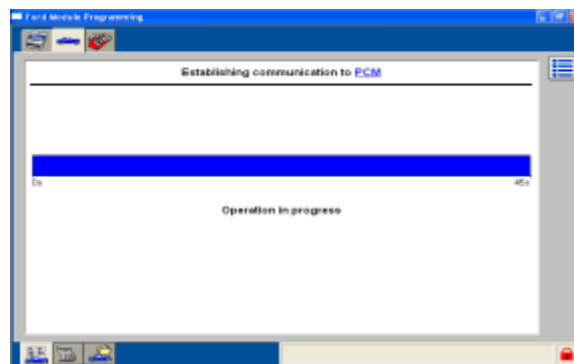
- Click on the “Tick icon”.



- Establish an Internet connection and select “Confirm”.



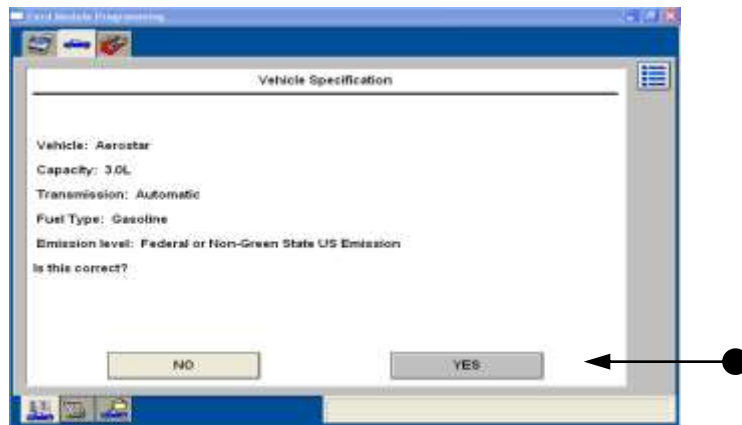
- Read the important “Warning” information. Turn ignition key “On” and click the “Tick icon”.



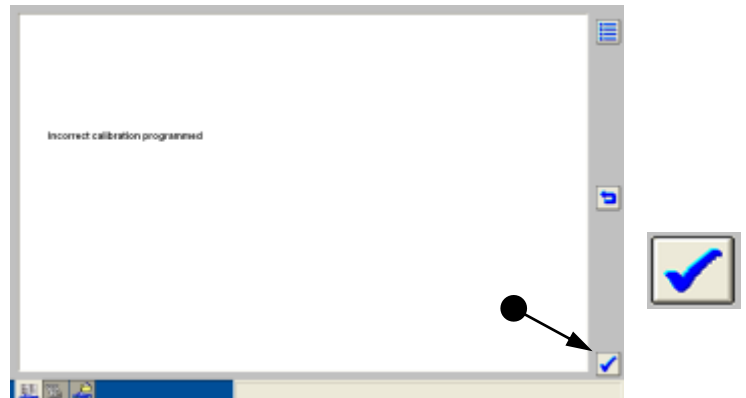
- Establishing communication with the PCM.

This document is copyrighted by Dearborn Group, Inc. Permission is granted to copy all and/or entire page portions of this manual, provided such copies are for use with the product provided by DG Technologies (Dearborn Group, Inc.) or any of its affiliates, and that each instance of DG Technologies, Dearborn Group, Inc., and our website [www.dgtech.com](http://www.dgtech.com) remains on all copies as on the original.





- **IMPORTANT!** Correct vehicle identification is critical!
  - Click "YES" if:
    - the original PCM is being programmed and the information is correct.
    - the original PCM is being replaced and communication was successful and the information is correct.
    - **Proceed to pg. 16**
  - Click "NO" if:
    - the original PCM is not available.
    - communication to the original PCM was not successful.
    - a replacement PCM is already installed in the vehicle.
    - **If "NO" is selected...**

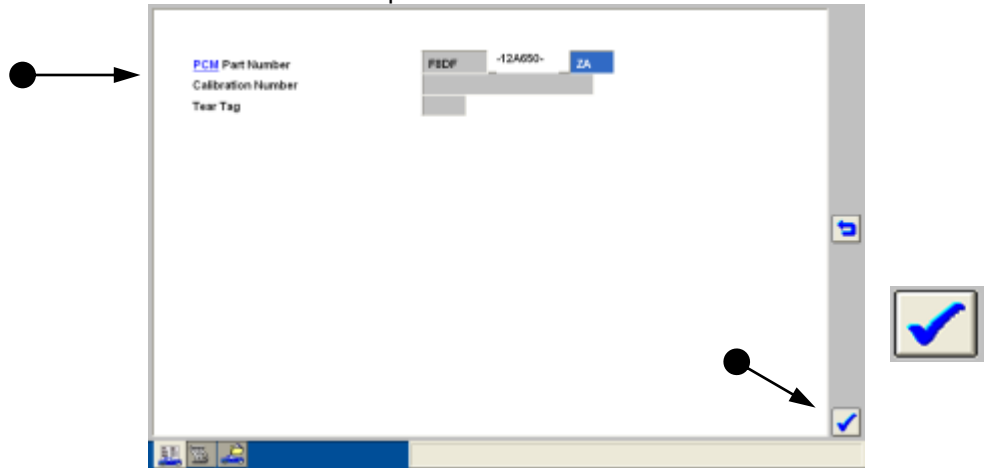


- Click on the "Tick icon".

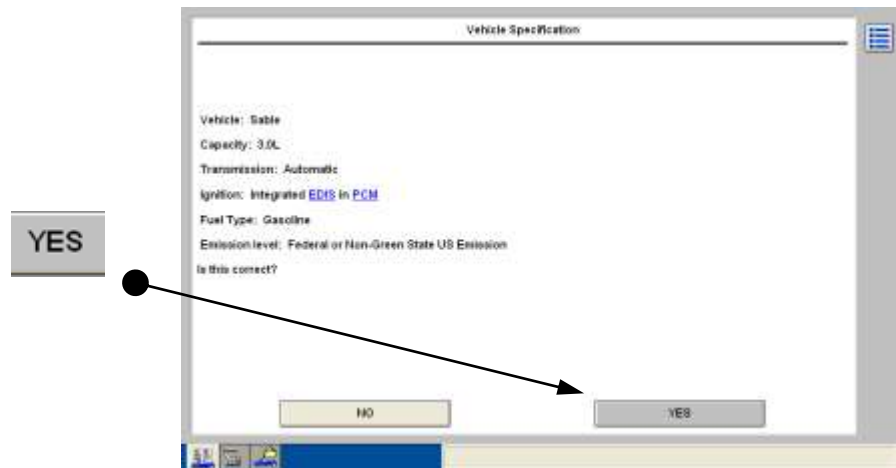


This document is copyrighted by Dearborn Group, Inc. Permission is granted to copy all and/or entire page portions of this manual, provided such copies are for use with the product provided by DG Technologies (Dearborn Group, Inc.) or any of its affiliates, and that each instance of DG Technologies, Dearborn Group, Inc., and our website [www.dgtech.com](http://www.dgtech.com) remains on all copies as on the original.

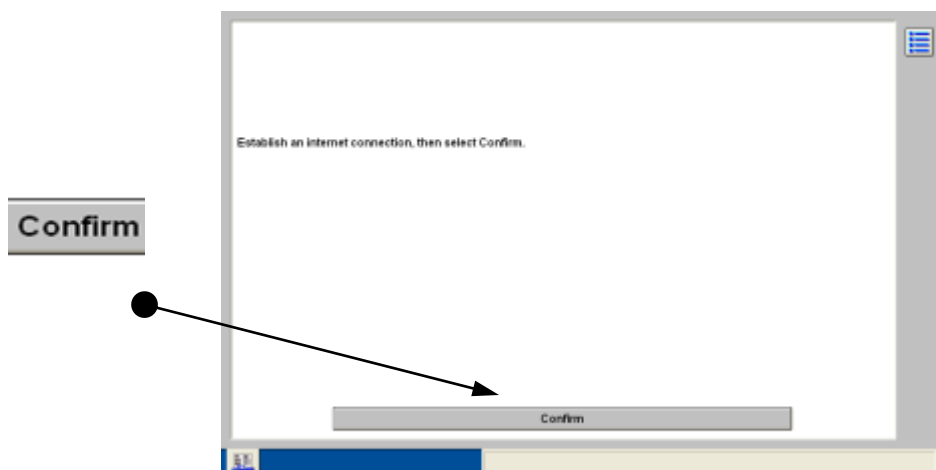
- Gather the required information and click on the “Tick” icon. Tear tag data is considered the best option.



- Type in one of the required information inputs and click on the “Tick” icon.

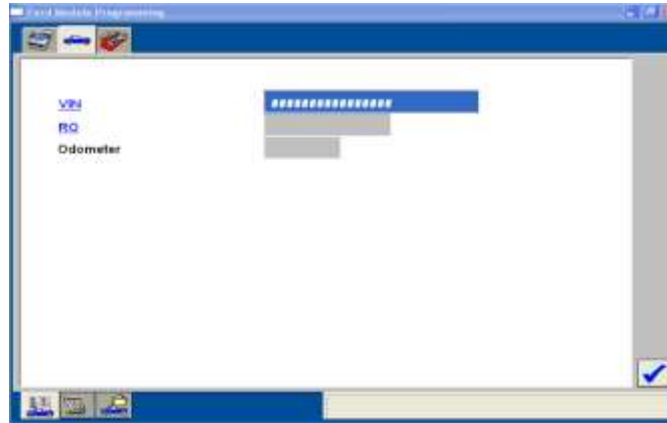


- Vehicle Specification has been corrected to the proper vehicle. Click on “Yes” to accept change.



- Select “Confirm” and proceed.

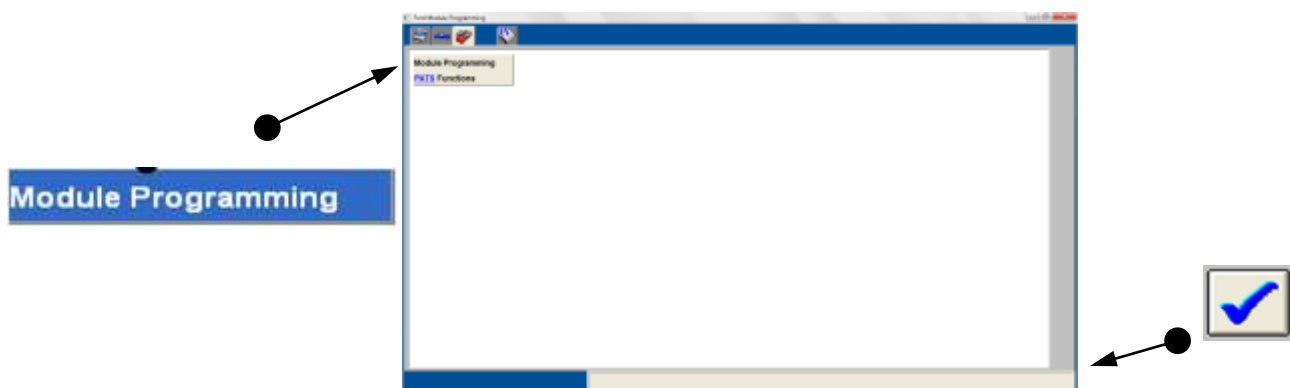
This document is copyrighted by Dearborn Group, Inc. Permission is granted to copy all and/or entire page portions of this manual, provided such copies are for use with the product provided by DG Technologies (Dearborn Group, Inc.) or any of its affiliates, and that each instance of DG Technologies, Dearborn Group, Inc., and our website [www.dgtech.com](http://www.dgtech.com) remains on all copies as on the original.



- These fields are **OPTIONAL**. For more details, see the Ford Module Programming User's Guide. Click on the "Tick icon".

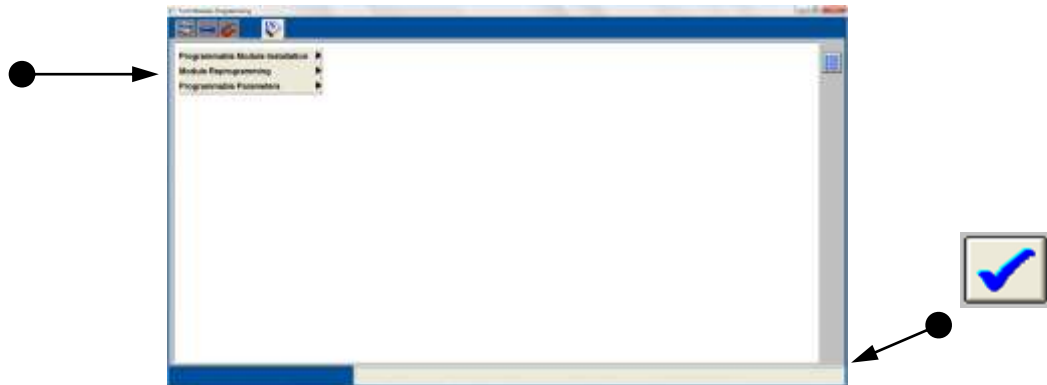


- Click on the "Toolbox Tab".

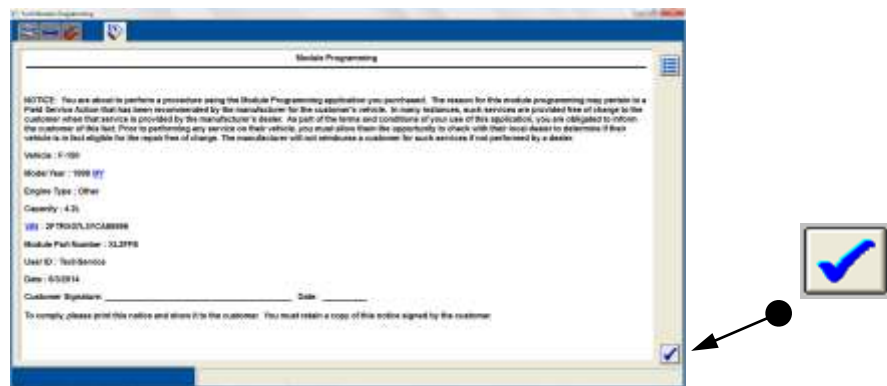


- Click on "Module Programming" and then the "Tick icon".

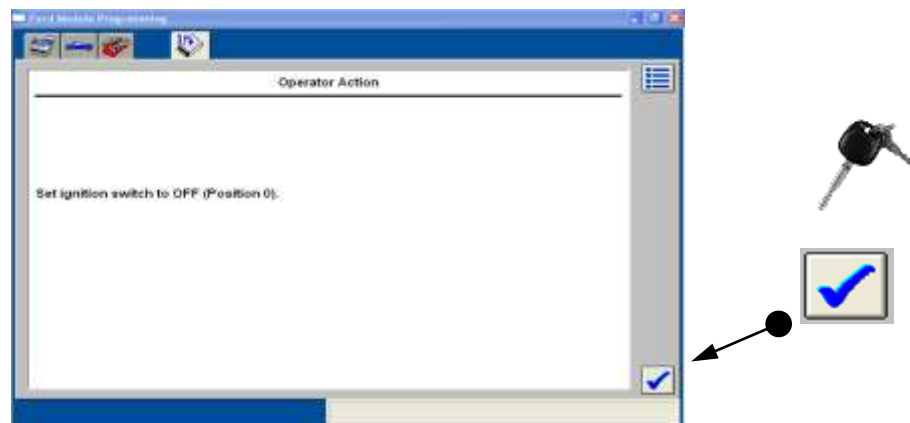
This document is copyrighted by Dearborn Group, Inc. Permission is granted to copy all and/or entire page portions of this manual, provided such copies are for use with the product provided by DG Technologies (Dearborn Group, Inc.) or any of its affiliates, and that each instance of DG Technologies, Dearborn Group, Inc., and our website [www.dgtech.com](http://www.dgtech.com) remains on all copies as on the original.



- **Programmable Module Installation:** Use this option when replacing a PCM when the original PCM communication was successful.
- **Module Reprogramming:** Use this option when reprogramming a module with an updated calibration file.
- **Programmable Parameters:** (not shown, but would be listed if applicable) change configurable parameters such as customer preference items (ex: horn chirp, lighting delays, etc.) or vehicle modifications (ex: tire size or axle ratio).
- Select the appropriate option and then the “Tick icon”.

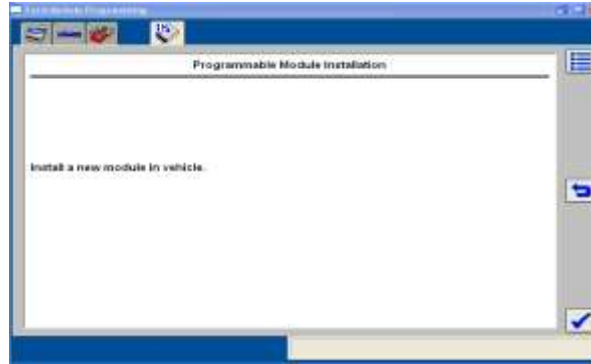


- Read this “Notice” and click on the “Tick icon”.

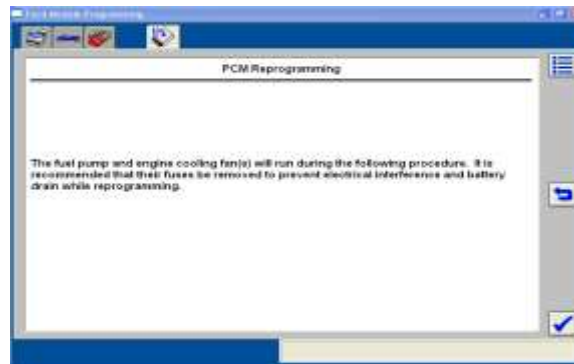


- Make sure the vehicle’s Ignition Switch is in the “Off” position and click the “Tick icon”.

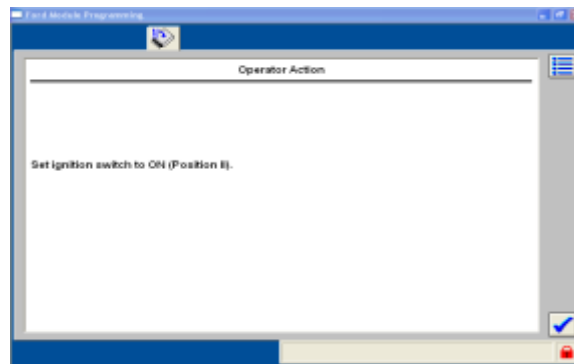
This document is copyrighted by Dearborn Group, Inc. Permission is granted to copy all and/or entire page portions of this manual, provided such copies are for use with the product provided by DG Technologies (Dearborn Group, Inc.) or any of its affiliates, and that each instance of DG Technologies, Dearborn Group, Inc., and our website [www.dgtech.com](http://www.dgtech.com) remains on all copies as on the original.



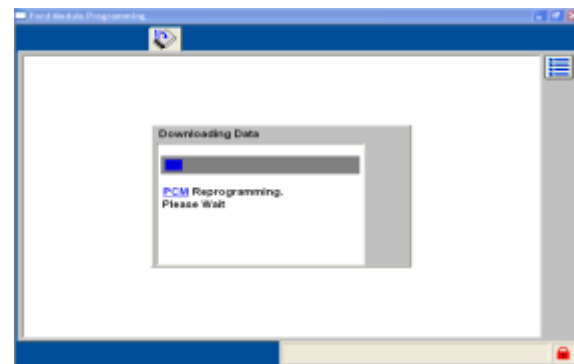
- Click on the “Tick icon”.



- Click on the “Tick icon”.



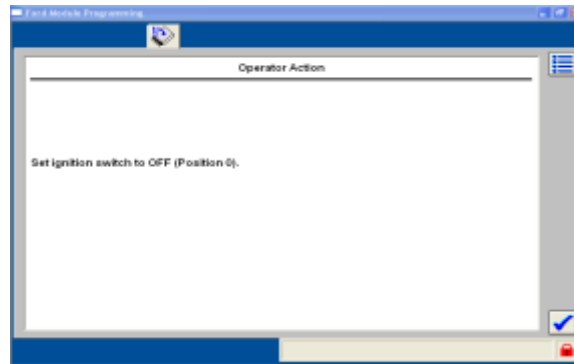
- Make sure the vehicle’s Ignition Switch is in the “On” position and click the “Tick icon”.



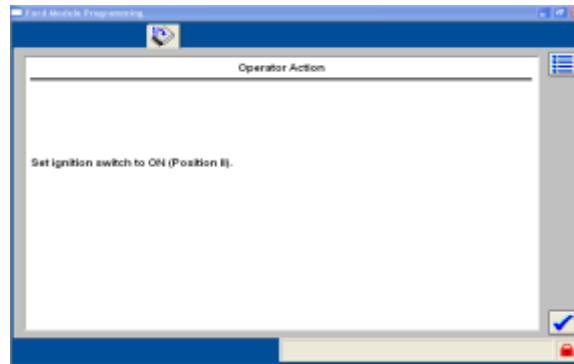
- FLASH Reprogramming!

This document is copyrighted by Dearborn Group, Inc. Permission is granted to copy all and/or entire page portions of this manual, provided such copies are for use with the product provided by DG Technologies (Dearborn Group, Inc.) or any of its affiliates, and that each instance of DG Technologies, Dearborn Group, Inc., and our website [www.dgtech.com](http://www.dgtech.com) remains on all copies as on the original.

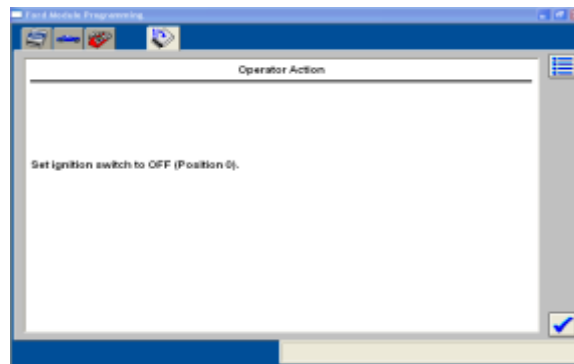




- Make sure the vehicle's Ignition Switch is in the "Off" position and click the "Tick Icon".



- Make sure the vehicle's Ignition Switch is in the "On" position and click the "Tick Icon".



- Make sure the vehicle's Ignition Switch is in the "OFF" position and click the "Tick Icon".

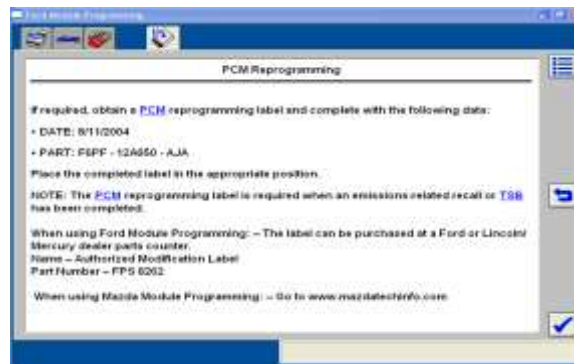


- Click on the "Tick icon".

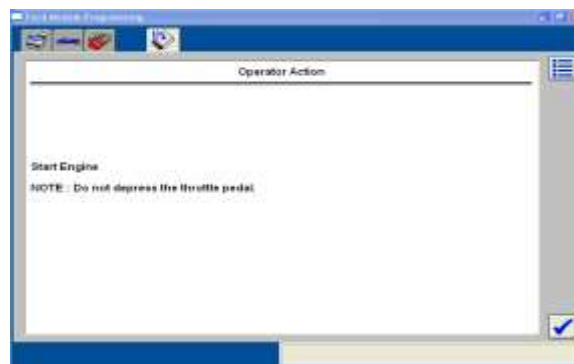
This document is copyrighted by Dearborn Group, Inc. Permission is granted to copy all and/or entire page portions of this manual, provided such copies are for use with the product provided by DG Technologies (Dearborn Group, Inc.) or any of its affiliates, and that each instance of DG Technologies, Dearborn Group, Inc., and our website [www.dgtech.com](http://www.dgtech.com) remains on all copies as on the original.



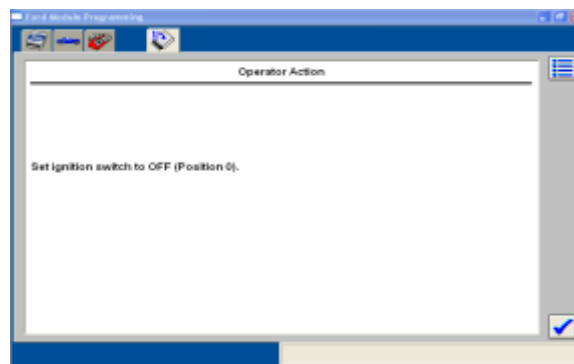
- Click on the “Tick icon”.



- Read carefully and take the appropriate action necessary. Click on the “Tick icon”.

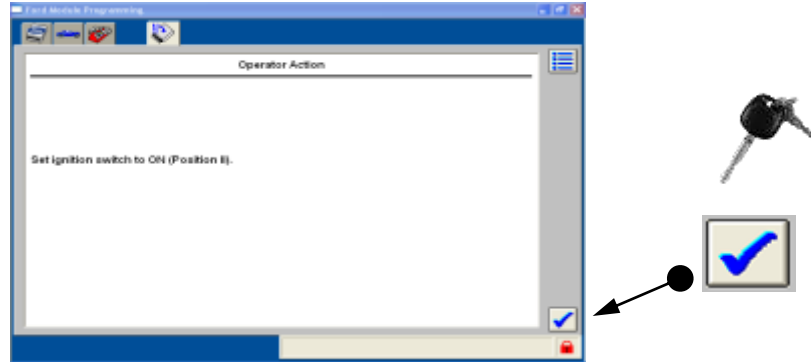


- “Start Engine” and then click on the “Tick icon”.



- Make sure the vehicle’s Ignition Switch is in the “Off” position and click the “Tick Icon”.

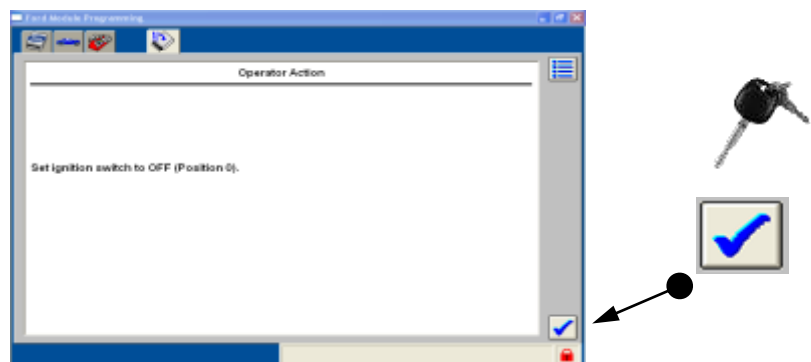
This document is copyrighted by Dearborn Group, Inc. Permission is granted to copy all and/or entire page portions of this manual, provided such copies are for use with the product provided by DG Technologies (Dearborn Group, Inc.) or any of its affiliates, and that each instance of DG Technologies, Dearborn Group, Inc., and our website [www.dgtech.com](http://www.dgtech.com) remains on all copies as on the original.



- Make sure the vehicle's Ignition Switch is in the "On" position and click the "Tick Icon".



- Clearing Fault Codes...Wait...

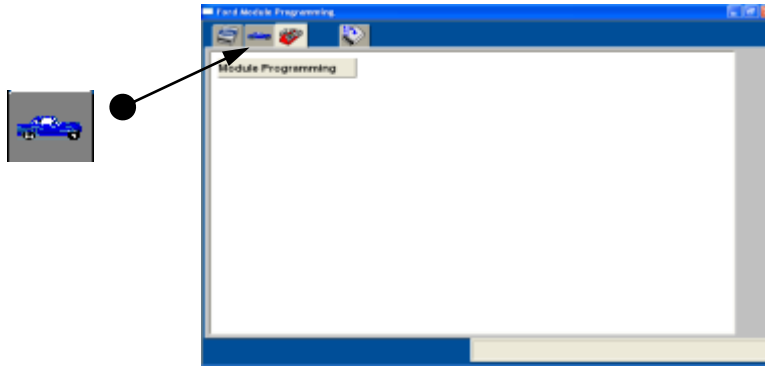


- Make sure the vehicle's Ignition Switch is in the "Off" position and click the "Tick Icon".

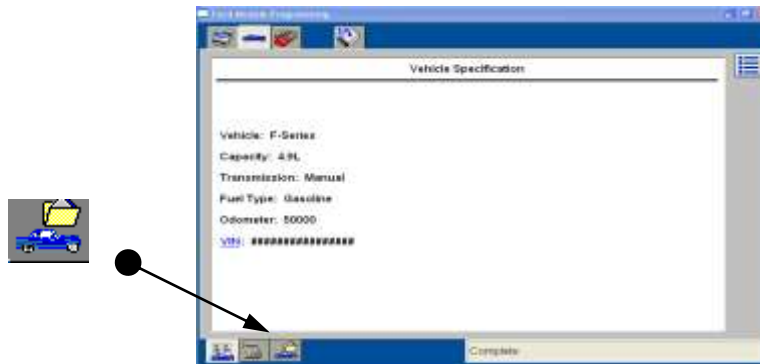


- In order to go to the next Flash event, you must clear the current session. To start this process, click on the "Toolbox Tab".

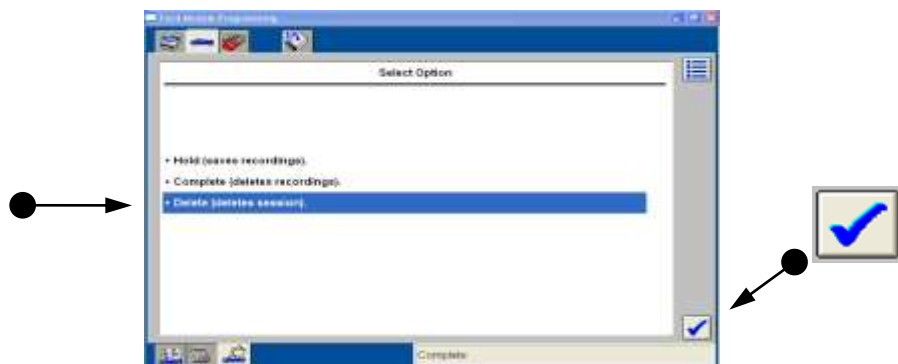
This document is copyrighted by Dearborn Group, Inc. Permission is granted to copy all and/or entire page portions of this manual, provided such copies are for use with the product provided by DG Technologies (Dearborn Group, Inc.) or any of its affiliates, and that each instance of DG Technologies, Dearborn Group, Inc., and our website [www.dgtech.com](http://www.dgtech.com) remains on all copies as on the original.



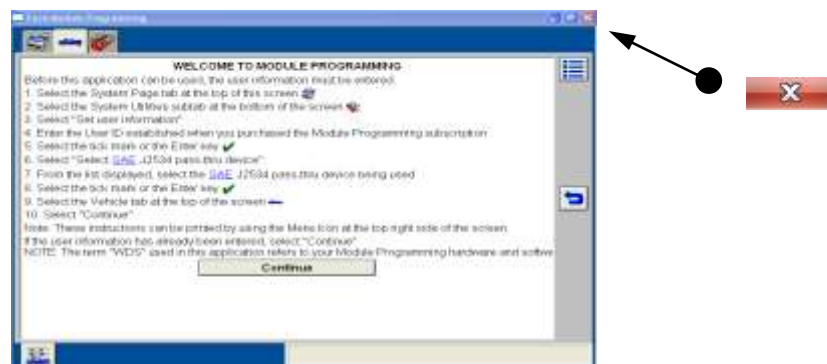
- Click on the “Vehicle” tab.



- Click on the “Close Session” sub-tab.



- Refer to the Ford Module Programming User’s Guide for details. Make selection and click on the “Tick icon”.



- Click on the red “X” in the upper right-hand corner of the window.

This document is copyrighted by Dearborn Group, Inc. Permission is granted to copy all and/or entire page portions of this manual, provided such copies are for use with the product provided by DG Technologies (Dearborn Group, Inc.) or any of its affiliates, and that each instance of DG Technologies, Dearborn Group, Inc., and our website [www.dgtech.com](http://www.dgtech.com) remains on all copies as on the original.