

Gryphon S4



DG TECHNOLOGIES
Vehicle Network Solutions



A compact, high-end vehicle network development tool with 2 built-in high speed CAN channels, 1 protocol card expansion slot, and digital I/O capability enabling vehicle data logging & network architecture activities

Differentiation

Low cost development tool with network gateway and data logging functionality

Key Features

Hardware

- 2 Built-In HS CAN Channels
- Protocol Card Expansion Slot
- Data Logging & Network Gateway
- On-board Digital I/O
- Linux Operating System 
- Wi-Fi Enabled 
- Built-in Web Server
- Standardized access to on-board CAN channels and I/O (Molex)
- 100Mbps Ethernet Connection, 2 USB Ports

PC Software

- Hercules (Analysis Software)
- Gryphon Logger Config (Data Logger Software)
- J2534 & RP1210 API Compatible
- Compatible with Busmaster, Matlab, LabView and more



Technical Specs

Physical: 2" x 5.25" x 4.5", -10 to 80° C

Electrical: 8-32 VDC, (14.5 VDC Nominal) 500mA max

Benefits

- High end analyzer on a proven platform
- Hardware simulation & software validation
- Extensive data logging capability
- Diagnostic and reprogramming capability
- ECU development
- Embedded application support
- Multiple PC based applications interface with the S4 simultaneously

Expansion Cards

- Single Channel CAN FD
- Quad CAN (4 HS Channels)
- GM Quad CAN (1 SW & 3 HS Channels)
- Dual CAN (2 HS Channels)
- Single Wire CAN (2 Channels)
- Dual LIN (2 Channels)
- J1708 (2 Channels)
- I/O Card

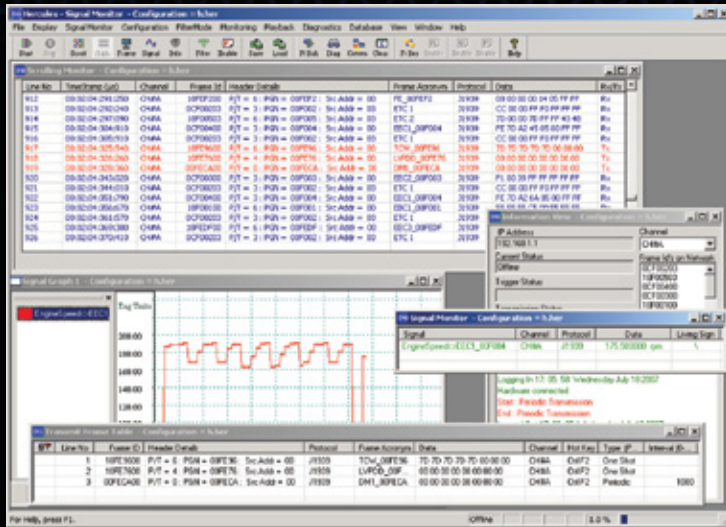


Hercules Software

World-class monitoring software included with the Gryphon S4, enabling in-vehicle network development.

Capabilities

ECU Development, Data Collection & Analysis, Hardware Simulation, LIN Emulation and Testing



Features

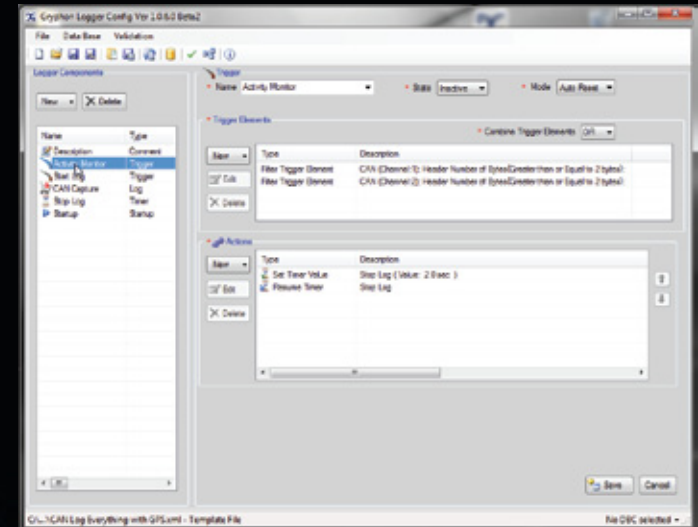
- Easy to use, intuitive menu structure
- Supports OBDII and ISO diagnostic services
- Supports a wide variety of vehicle protocols
- View, store and create messages quickly
- Record and playback data (timestamp enabled)
- Filter/Trigger based on messages or signals
- Real-time signal graphing
- Send single and broadcast messages (Hot-key enabled)
- Data Monitoring
 - Scrolling monitor displays messages with timestamps
 - Signal monitor displays signals with engineering values
 - InPlace monitor displays color coded message activity
- Frame Responder
 - Works in conjunction with triggering to send a message(s) in response to a user specified message being received
- Imports dbc files
- Save/Load XML configurations

Graphical Gryphon Logger Config

Application assisting Gryphon S4 users in the creation of a configuration file, harnessing the power of the Gryphon S4 for data logging.

Capabilities

- Graphical user interface
- Data collection and filtering on multiple channels
- Customize with Timers, Counters and Clocks
- Triggers by filter or digital I/O
 - Send Messages
 - Create Events
- Set master and sub schedules
- Automatically transfer data logs to server
 - Post-processing
 - Analysis
 - Backup



Features

- Quick Start templates for out-of-the-box logging
- Data logger can be also used as a responder or simulator
- Flexible configuration for multi-purpose data collection
- Logs vehicle data and GPS data
- Provides XML and component relation validation
- Supports dbc files
- Assists with efficient data transfer between the PC and Gryphon